

Wooden furniture lock



A-604-22
Ø18mm

PUSH LOCK

Specifications

- PUSH LOCK
- PUSH-IN LOCKING, NO KEY REQUIRED WHEN LOCKING
- KEY REMOVABLE IN LOCKED & UNLOCKED POSITIONS
- M5 INTERNAL THREAD LOCKING PIN
- ZINC ALLOY DIE CAST

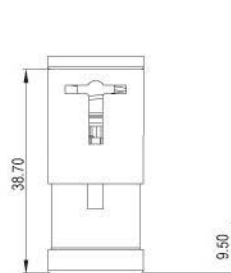
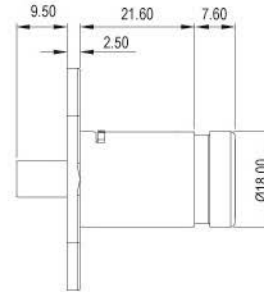
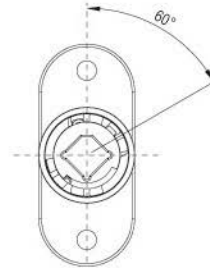
A set includes

- 1 LOCK HOUSING
- 1 CYLINDER CORE
- 2 KEYS
- 1 BEZEL

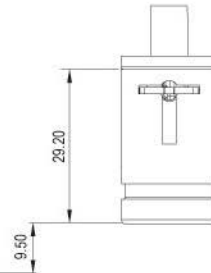
Accessories Options

- EXTENSION PIN (DU-036)

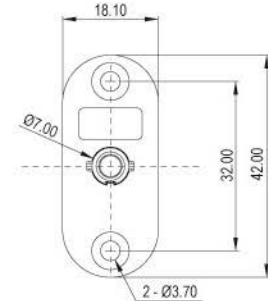
Dimensions



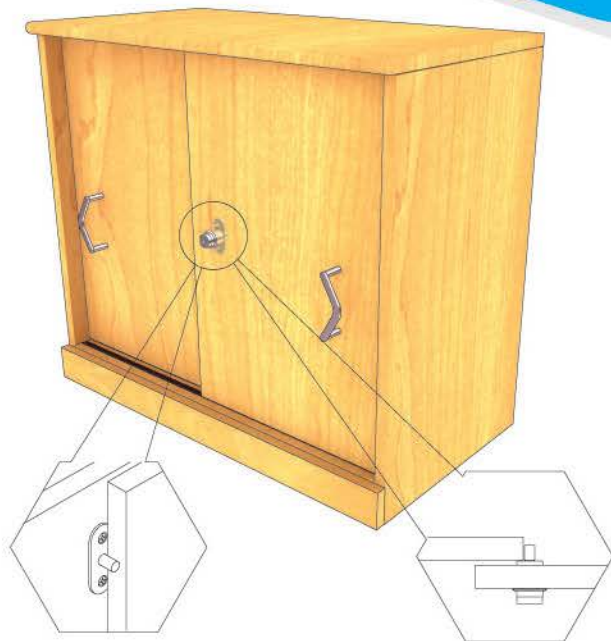
OPEN POSITION



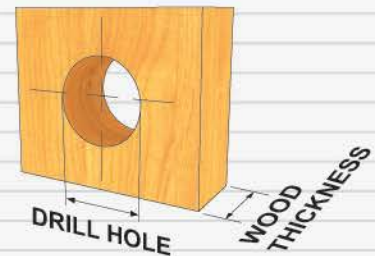
CLOSE POSITION



Finished



PUSH LOCK



Drill hole

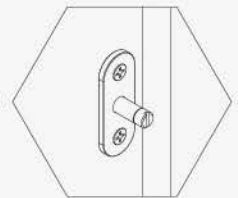
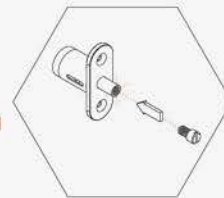
Ø 19mm FOR 18mm HOUSING DIAMETER.

Wood Thickness

16-20mm - USE 22mm CYLINDER HOUSING LENGTH

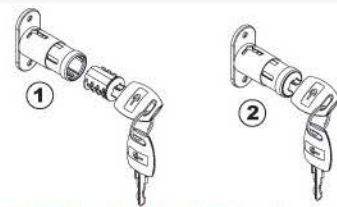


EXTENSION PIN (DU-036)



PIN EXTENDABLE WITH OPTIONAL EXTENSION PIN (ADDS 5mm)

Fixing Details



INSERTION OF CYLINDER CORE

1. INSTALL CYLINDER CORE WITH INSERTED KEY IN CYLINDER HOUSING.
BE SURE TO ALIGN THE TWO DIAMOND SHAPED OBJECTS ON BOTH CYLINDER CORE AND CYLINDER HOUSING.
2. APPLY LIGHT PRESSURE UNTIL CYLINDER CORE SNAPS INTO PLACE.



REMOVAL OF CYLINDER CORE

1. INSERT ORIGINAL KEY INTO CYLINDER CORE AND TURN 22.5° TO THE RIGHT (UNLOCKED POSITION).
2. INSERT REMOVAL KEY INTO CYLINDER CORE.
3. REMOVE CYLINDER CORE WITH REMOVAL KEY FROM CYLINDER HOUSING.