

Wooden furniture lock



A-605-22
Ø18mm
A-705-22
Ø16.5mm

MORTISE LOCK

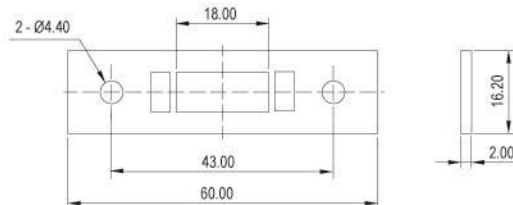
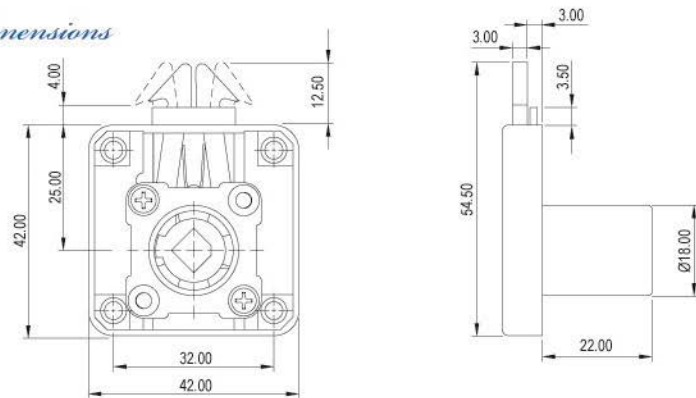
Specifications

- MORTISE LOCK
- CLICK ACTION MECHANISM
- KEY REMOVABLE IN LOCKED & UNLOCKED POSITIONS
- ZINC ALLOY DIE CAST

A set includes

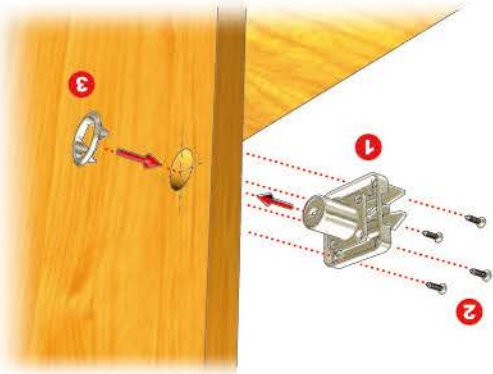
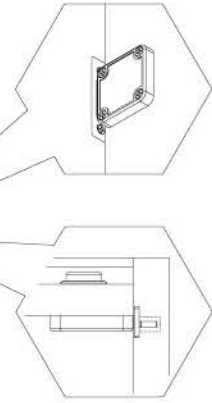
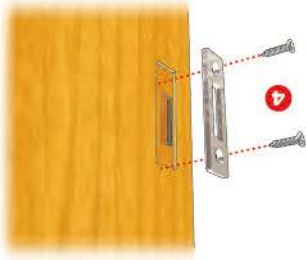
- 1 LOCK HOUSING
- 1 CYLINDER CORE
- 2 KEYS
- 1 BEZEL
- 1 STRIKE PLATE

Dimensions

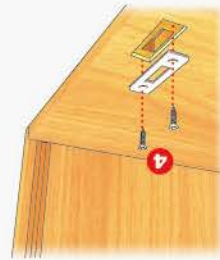
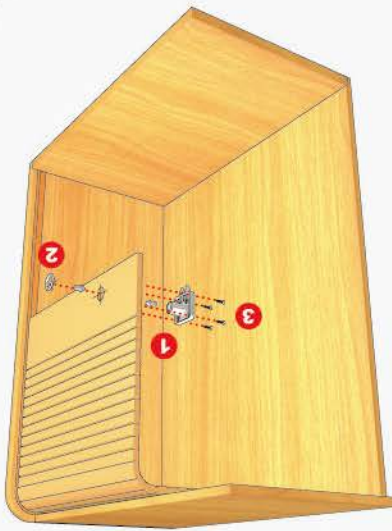


DK-102

FOR SLIDING DOOR CABINET

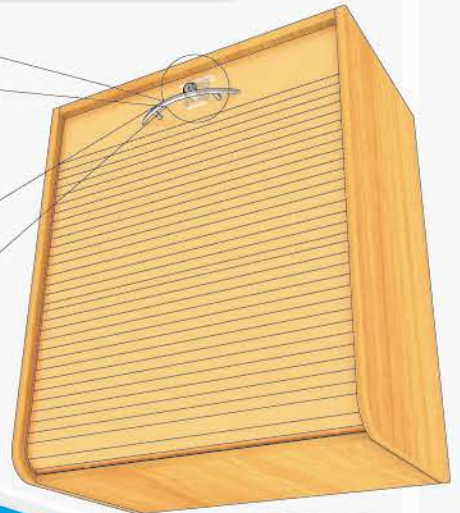
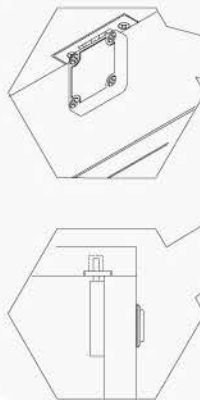


Fixing Details



Fixing Details

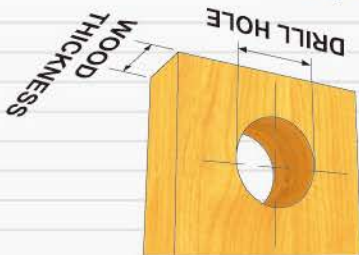
FOR SHUTTER ROLLER CABINET



Finished

Wood Thickness
 16-20mm - USE 22mm CYLINDER HOUSING LENGTH

Drill hole
 Ø 17.5mm FOR 16.5mm HOUSING DIAMETER
 Ø 19mm FOR 18mm HOUSING DIAMETER



MORTISE LOCK