

Wooden furniture lock

THE COLORS ON CATALOGUE ARE FOR GUIDANCE ONLY, ACTUAL PRODUCT COLORS MAY DIFFER.



A-625-09-01
A-625-12-01

A-625-09-02
A-625-12-02

A-625-09-03
A-625-12-03

A-625-09-04
A-625-12-04

A-625-09-27
A-625-12-27

A-625-09-28
A-625-12-28



A-625-09-UP

FOR 4-7mm GLASS THICKNESS

A-625-12-UP

FOR 4-10mm GLASS THICKNESS

Specifications

- UPWARD VERSION DOUBLE GLASS DOOR LOCK
- CYLINDER HOUSING ALSO FUNCTIONS AS HANDLE
- CLICK ACTION MECHANISM
- TWO LENGTHS AVAILABLE FOR VARIOUS GLASS THICKNESSES
- EASY INSTALLATION, NO GLASS DRILLING REQUIRED

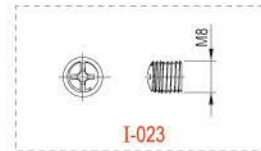
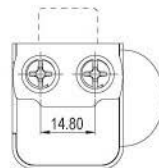
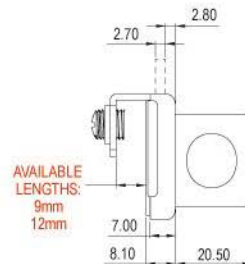
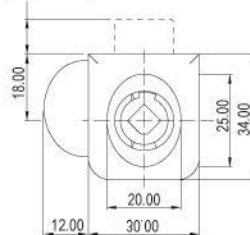
A set includes

- 1 LOCK HOUSING
- 1 STRIKE PLATE
- 1 CYLINDER CORE
- 2 SCREWS
- 2 KEYS

GLASS DOOR LOCK (UPWARD VERSION)

Dimensions

(STROKE 9.50)



Wooden furniture lock

THE COLORS ON CATALOGUE ARE FOR GUIDANCE ONLY, ACTUAL PRODUCT COLORS MAY DIFFER.



A-625-09-01
A-625-12-01



A-625-09-02
A-625-12-02



A-625-09-03
A-625-12-03



A-625-09-04
A-625-12-04



A-625-09-27
A-625-12-27



A-625-09-28
A-625-12-28



A-625-09-DOWN FOR 4-7mm GLASS THICKNESS

A-625-12-DOWN FOR 4-10mm GLASS THICKNESS

Specifications

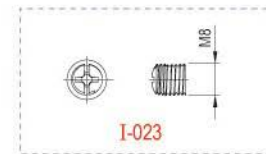
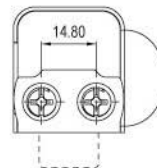
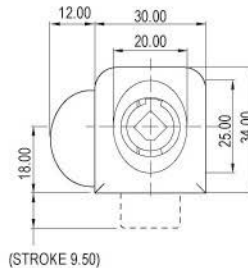
- DOWNWARD VERSION DOUBLE GLASS DOOR LOCK
- CYLINDER HOUSING ALSO FUNCTIONS AS HANDLE
- CLICK ACTION MECHANISM
- TWO LENGTHS AVAILABLE FOR VARIOUS GLASS THICKNESSES
- EASY INSTALLATION, NO GLASS DRILLING REQUIRED

A set includes

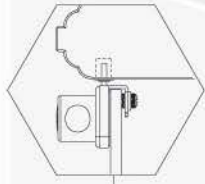
- 1 LOCK HOUSING
- 1 STRIKE PLATE
- 1 CYLINDER CORE
- 2 SCREWS
- 2 KEYS

GLASS DOOR LOCK (DOWNWARD VERSION)

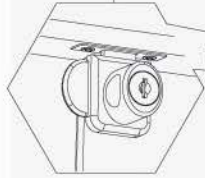
Dimensions



Wooden furniture lock

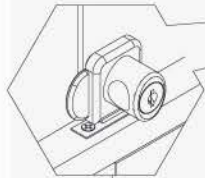


◀ TOP INSTALLATION

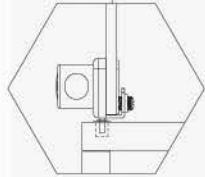


4-05-03-I023-L

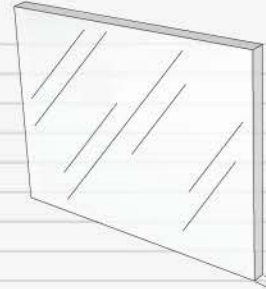
4-05-03-I023-R



◀ BOTTOM INSTALLATION



GLASS DOOR LOCK



GLASS THICKNESS

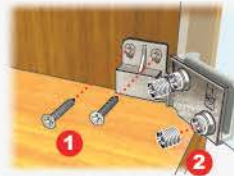
Glass Thickness

4-7mm - USE 09mm BRACKET LENGTH (A-625-09)

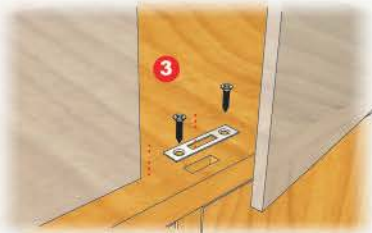
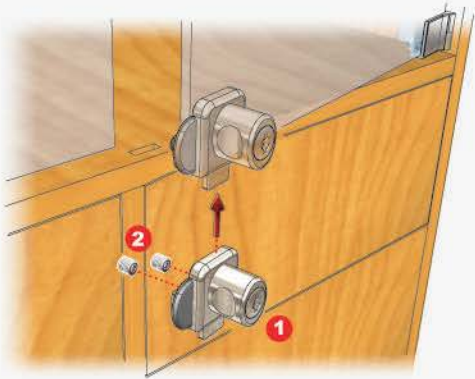
4-10mm - USE 12mm BRACKET LENGTH (A-625-12)

4-05-03-I023-R

4-05-03-I023-L



Fixing Details



Fixing Details

