

Wooden furniture lock



A-642L-22
Ø18mm



A-642R-22
Ø18mm



Specifications

- SLIDING GLASS DOOR LOCK
- AVAILABLE IN TWO VERSIONS : LEFT & RIGHT
- CLICK ACTION MECHANISM
- KEY REMOVABLE IN LOCKED & UNLOCKED POSITIONS
- ZINC ALLOY DIE CAST

A set includes

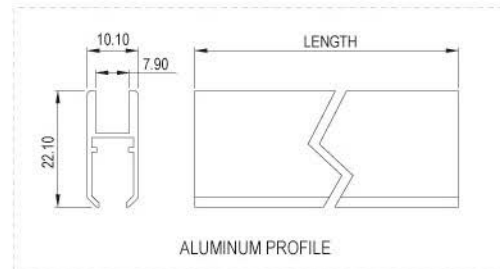
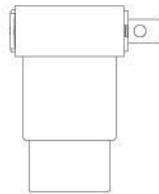
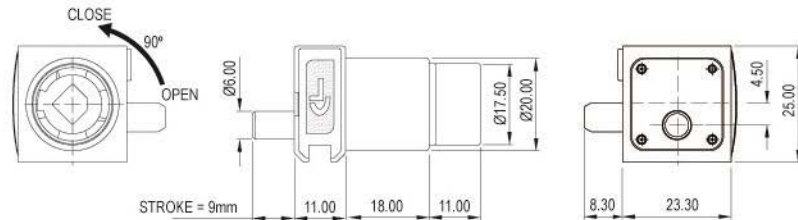
- 1 LOCK HOUSING
- 1 CYLINDER CORE
- 2 KEYS

Accessories Options

- ROLLER SET

GLASS DOOR LOCK

Dimensions



Wooden furniture lock



A-642L-22-DA208
Ø18mm



A-642R-22-DA208
Ø18mm



Specifications

- SLIDING GLASS DOOR LOCK
- AVAILABLE IN TWO VERSIONS : LEFT & RIGHT
- CLICK ACTION MECHANISM
- KEY REMOVABLE IN LOCKED & UNLOCKED POSITIONS
- ZINC ALLOY DIE CAST

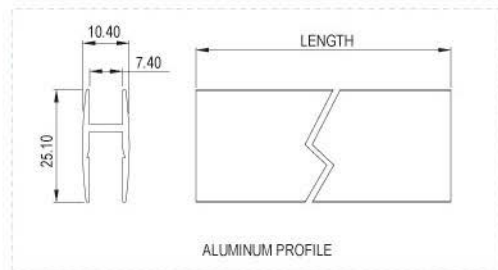
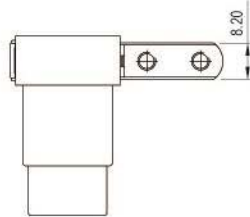
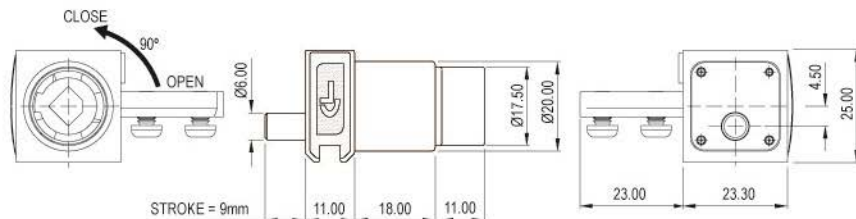
A set includes

- 1 LOCK HOUSING
- 1 CYLINDER CORE
- 2 KEYS

Accessories Options

- ROLLER SET

Dimensions



Wooden furniture lock



A-642L-22-DA194
Ø18mm



A-642R-22-DA194
Ø18mm



Specifications

- SLIDING GLASS DOOR LOCK
- AVAILABLE IN TWO VERSIONS : LEFT & RIGHT
- CLICK ACTION MECHANISM
- KEY REMOVABLE IN LOCKED & UNLOCKED POSITIONS
- ZINC ALLOY DIE CAST

A set includes

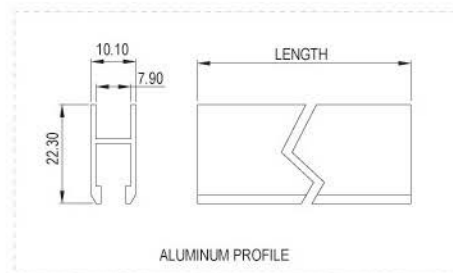
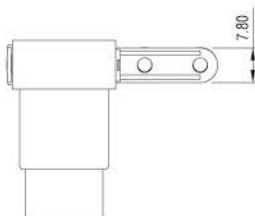
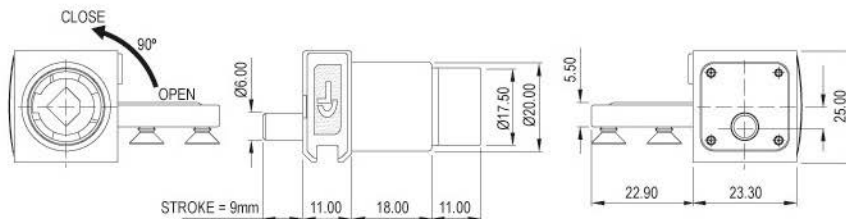
- 1 LOCK HOUSING
- 1 CYLINDER CORE
- 2 KEYS

Accessories Options

- ROLLER SET

GLASS DOOR LOCK

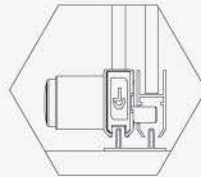
Dimensions



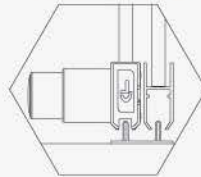
Finished



Locked



Unlocked



GLASS DOOR LOCK

FIGURE 1



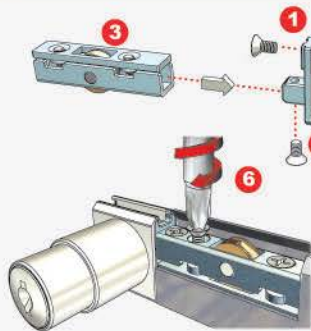
FIGURE 2



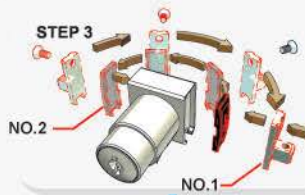
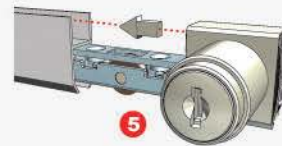
FIGURE 3



ROLLER SET FOR A-642



Fixing Details



RIGHT

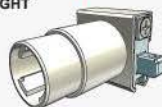


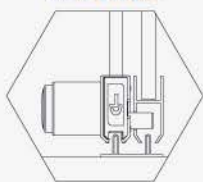
ILLUSTRATION OF LEFT OR RIGHT SIDE INSTALLATION

1. Undo the screw (NO.1) and remove the component fixed to the lock.
2. Remove the cap (NO.2) from the opposite side.
3. Replace the component (NO.1) in the location of the cap (NO.2) and secure the screw, and vice-versa.

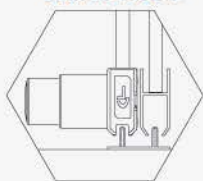
Finished



Locked



Unlocked



GLASS DOOR LOCK

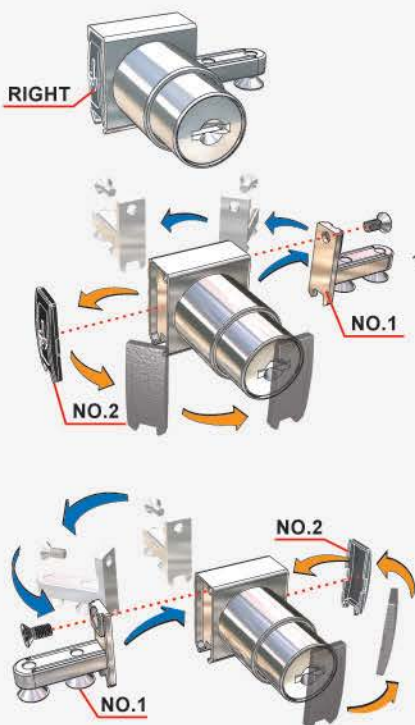
FIGURE 1



FIGURE 2



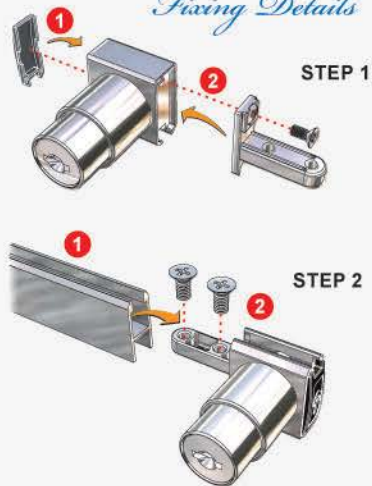
ILLUSTRATION OF LEFT OR RIGHTSIDE INSTALLATION



1. Undo the screw (NO.1) and remove the component fixed to the lock.

2. Remove the cap (NO.2) from the opposite side.

Fixing Details



STEP 1

STEP 2

3. Replace the component (NO.1) in the location of the cap (NO.2) and secure the screw, and vice-versa.

